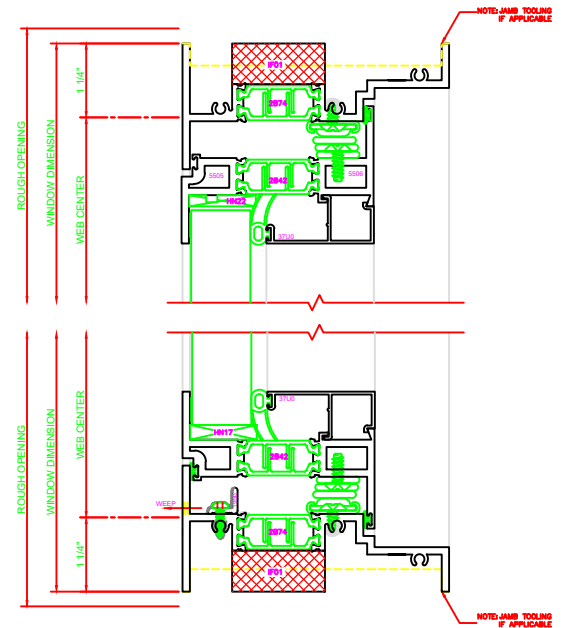


430	JAMB
	SERIES: 450X CASEMENT IN 4-BAR ARMS

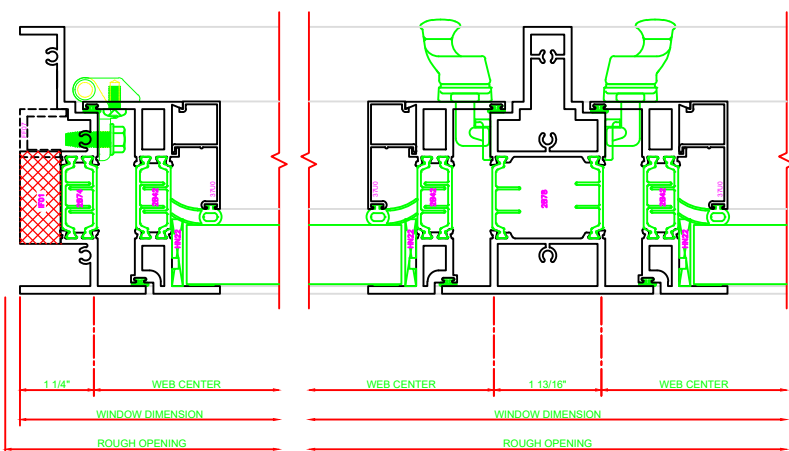
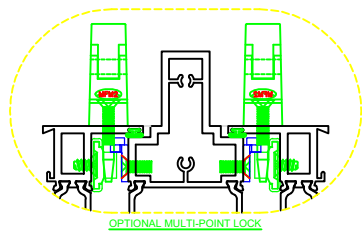
632	MEETING RAIL
	SERIES: 450X C./C.L.

130	HEAD
	SERIES: 450X CASEMENT IN 4-BAR ARMS

230	SILL
	SERIES: 450X CASEMENT IN 4-BAR ARMS



4-BAR ARMS BUTT HINGE

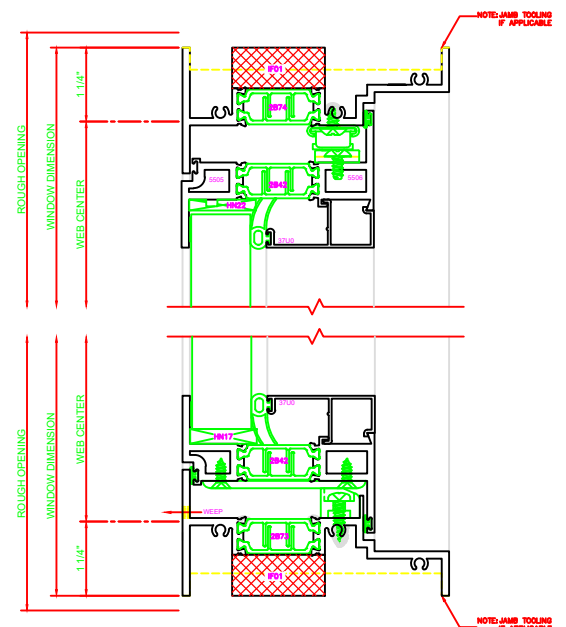


432	JAMB
	SERIES: 450X CASEMENT IN BUTT HINGE

632	MEETING RAIL
	SERIES: 450X C./C.L.

131	HEAD
	SERIES: 450X CASEMENT IN BUTT HINGE

231	SILL
	SERIES: 450X CASEMENT IN BUTT HINGE



ERECTOR NOTE:
THE HINGED JAMB FRAME SHALL BE INSTALLED PLUMB. ALL HINGES SHALL BE SECURELY BLOCKED AND ANCHORED TO THE CONDITION THROUGH THE HINGES OR AS CLOSE AS POSSIBLE TO THE HINGES.